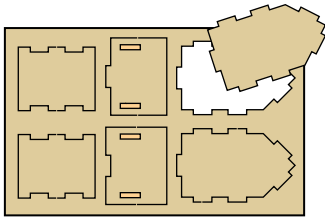


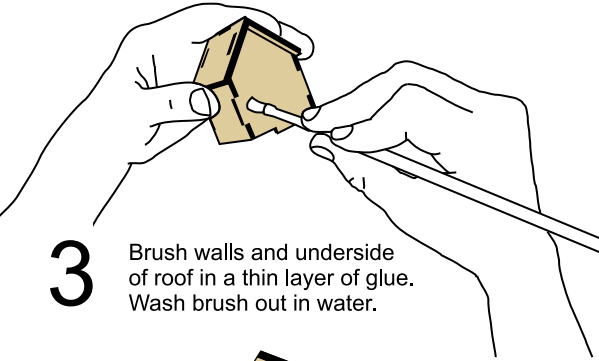
# HAMLET

# INSTRUCTIONS

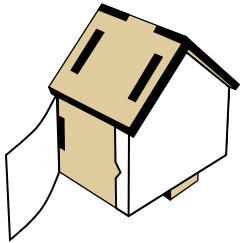


**1** To make buildings remove parts from the frame. Sand off any rough bits.

**2** Push the parts together as shown: walls first, then the roof. Tap with a hammer as needed.



**3** Brush walls and underside of roof in a thin layer of glue. Wash brush out in water.



**4** Wrap with pre-cut decorative paper (or use a blank to design your own). Start with the corner indicated. Extra glue is needed on the underlap shown with a notch.

**5** To make bases: remove parts from their frame and sand off any rough bits.

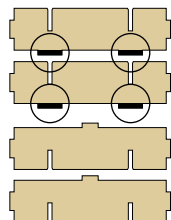
Apply glue to the four tabs as shown.

Push the parts together.

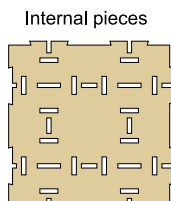
The four glued tabs fit tightly into slots in the surface piece.

Tap with a hammer as necessary to make a good fit.

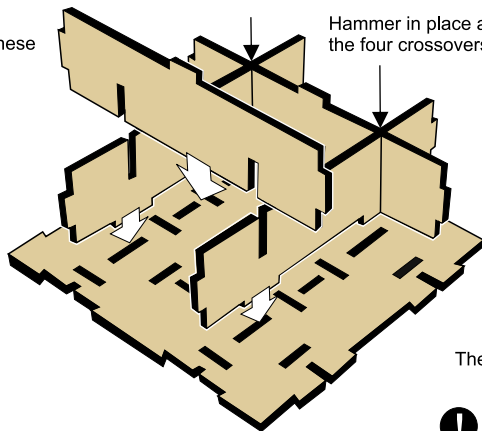
Wait one hour for glue to dry.



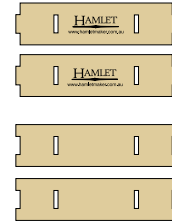
Glue these 4 tabs



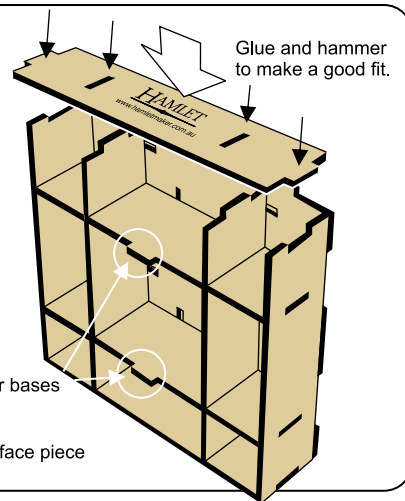
Internal pieces



Hammer in place at the four crossovers.



Side pieces



Glue and hammer to make a good fit.

These two tabs push into other bases

**!** Do not add the bottom surface piece

**6** Make the footprint of your terrain by joining surface pieces. Note: you will probably have some left over.

**7** Push bases into the bottom layer. Add bases on top to make multi-layer terrain.

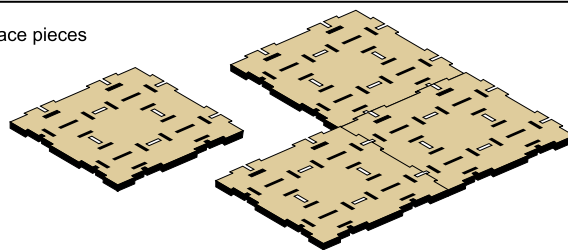
The two tabs in the bottom of each base push into slots.

Bases can be in line or off-set.

When adding bases make the receiving part available for the inserting part of the next base you want to add.

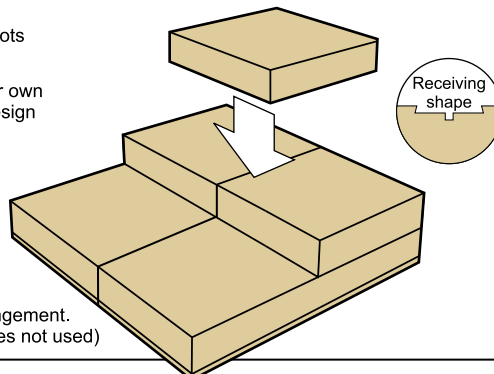
**8** Push your buildings into place and design your settlement.

Surface pieces

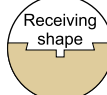


Push bases into slots

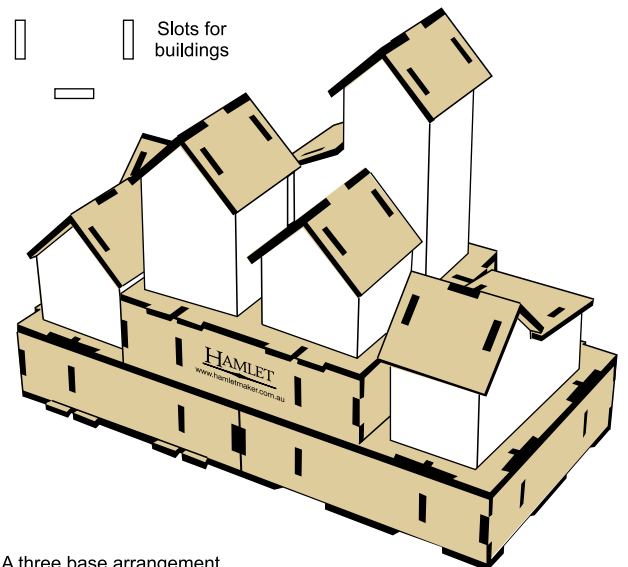
Come up with your own configuration to design your terrain.



A seven base arrangement. (three surface pieces not used)



Slots for buildings



A three base arrangement. (one surface piece not used)